



9am



10am



11am



12pm



1pm



2pm



3pm

SOLAR ACCESS STUDY C.O.S BLOCK D & E  
WINTER SOLSTICE

B	27.10.17	REISSUED FOR DEVELOPMENT APPLICATION	SP	ADM
A	20.10.17	ISSUED FOR DEVELOPMENT APPLICATION	SP	ADM
ISSUE	DATE	DESCRIPTION	initials	chkd
sign		date		
These drawings are not to be scaled. Figured dimensions shall be used in all cases.				

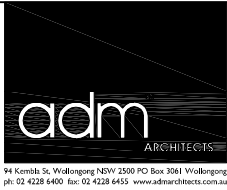
COPYRIGHT - These drawings remain the exclusive copyright of ADM Architects. Reproductions in any form whether electronic, digital or otherwise shall not be allowed except by express permission granted in writing by ADM Architects.

FIGURED DIMENSIONS - These drawings are not to be scaled. Figured dimensions shall be used in all cases.

DISCREPANCIES IN DIMENSIONS/POSITIONS/LOCATIONS/FINISHES The Contractor is to verify any dimensional, location or finish discrepancy with ADM Architects prior to any physical construction or setting out so that ADM Architects is given the opportunity to resolve potential discrepancies or conflicts in sufficient time without causing abortive work. The Contractor shall be responsible for notifying ADM Architects of any such discrepancy or conflict that may arise on site.

COORDINATION OF WORKS - These drawings are to be read in conjunction with the full set of consultant's drawings, specifications, reports and DA conditions.

NOMINATED ARCHITECT- The nominated Architects for ADM Projects (Australia) Pty Ltd T/A ADM Architects is Angelo Di Martino ARB No.7408



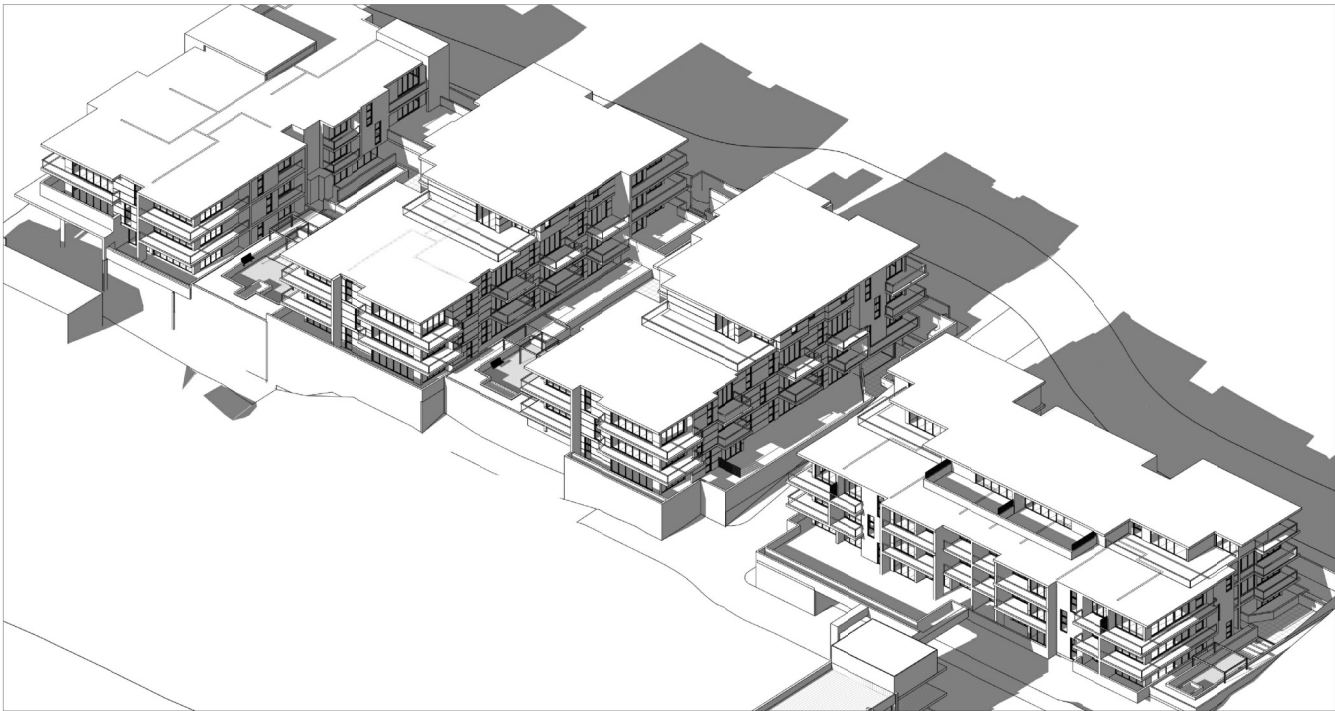
NICOLAS  
DAOUD &  
CO PTY. Ltd

Project  
DEMOLITION OF EXISTING STRUCTURES AND CONSTRUCTION  
OF A MIXED USE DEVELOPMENT COMPRISING RESIDENTIAL  
APARTMENTS ABOVE RETAIL SHOPS, COMMERCIAL TENANCIES  
AND ASSOCIATED CARPARKING AREAS  
at  
LOT 1, DP50193, LOT 3, DPI I04857, PT.1, DP506764, LOTS 100 & 200,  
DPI017091,  
AKUNA & TERRALONG STREET  
KIAMA

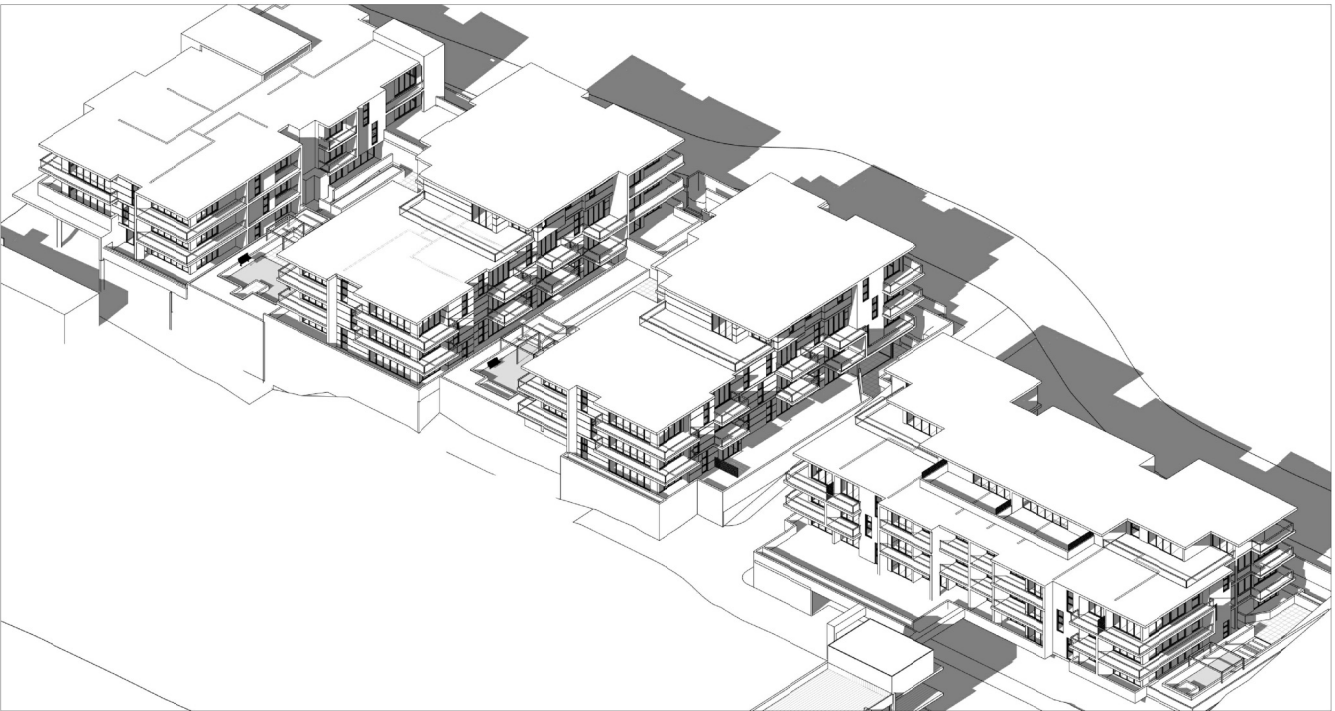
scale	NTS
date	OCTOBER 2017
drawn	djm SJ chkd ADM
drawing	DEVELOPMENT APPLICATION
Project No.	SOLAR ACCESS STUDY 3 of 3
2016-19(a)	Drawn No. A-404
	Issue B

NOT FOR CONSTRUCTION

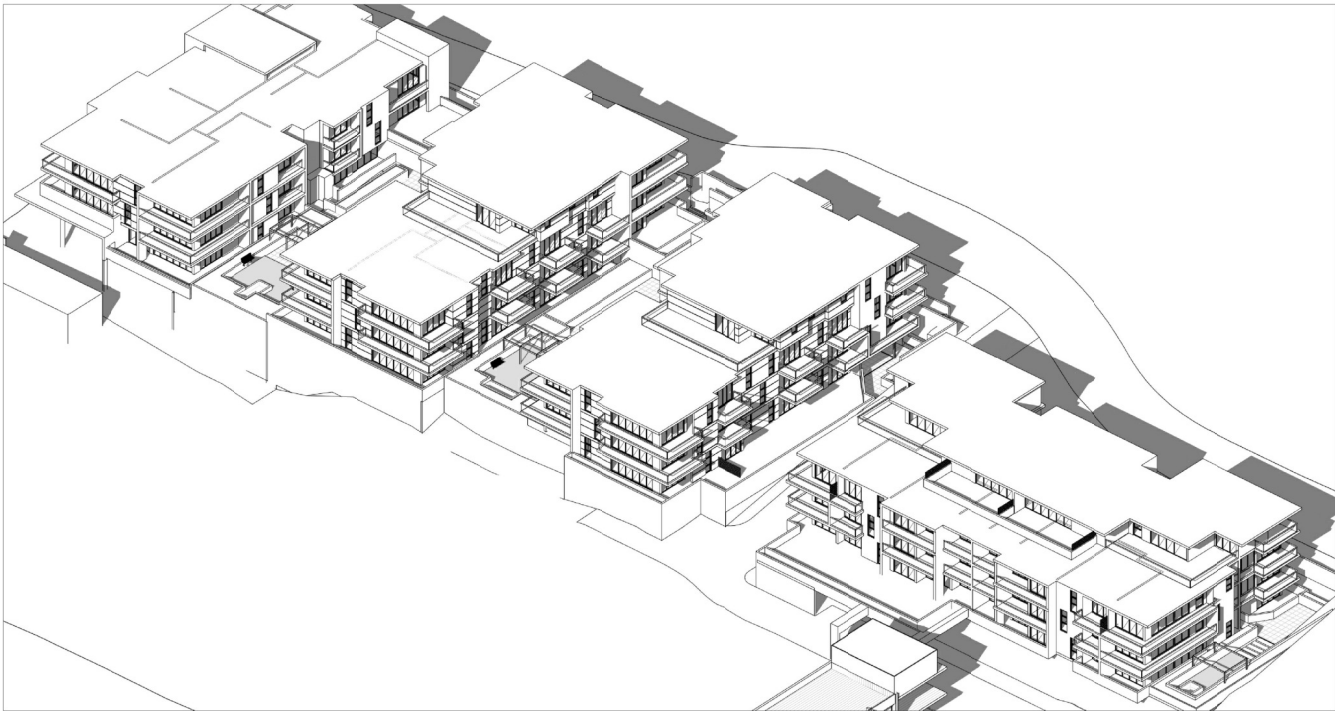




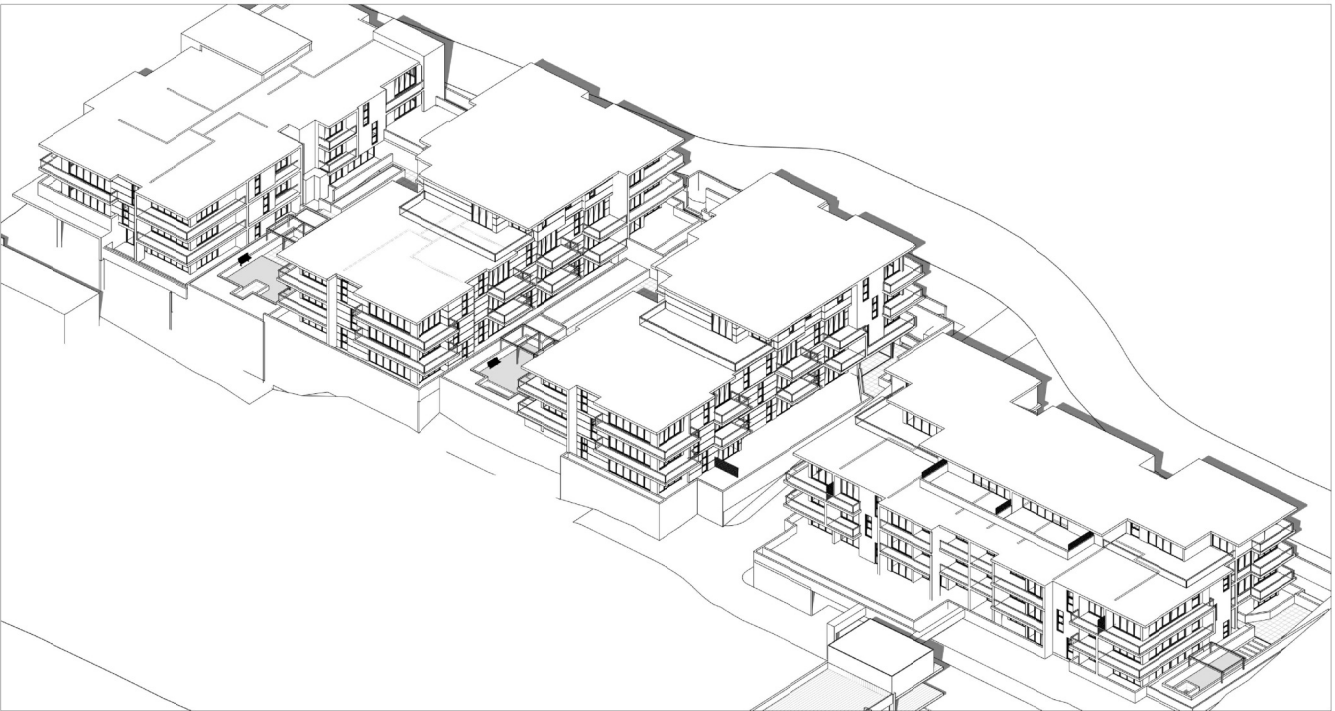
9am



10am



11am



12pm

# SOLAR ACCESS DIAGRAM WINTER SOLSTICE

D	05.12.17	RE-ISSUED FOR DEVELOPMENT APPLICATION	SP	ADM
C	01.12.17	RE-ISSUED FOR DEVELOPMENT APPLICATION	SP	ADM
B	27.10.17	RE-ISSUED FOR DEVELOPMENT APPLICATION	SP	ADM
A	20.10.17	ISSUED FOR DEVELOPMENT APPLICATION	SP	ADM
ISSUE	DATE	DESCRIPTION	initials	chkd
sign			date	
These drawings are not to be scaled. Figured dimensions shall be used in all cases.				

COPYRIGHT - These drawings remain the exclusive copyright of ADM Architects. Reproductions in any form whether electronic, digital or otherwise shall not be allowed except by express permission granted in writing by ADM Architects.

FIGURED DIMENSIONS - These drawings are not to be scaled. Figured dimensions shall be used in all cases.

DISCREPANCIES IN DIMENSIONS/POSITIONS/LOCATIONS/FINISHES The Contractor is to verify any dimensional, location or finish discrepancy with ADM Architects prior to any physical construction or setting out so that ADM Architects is given the opportunity to resolve potential discrepancies or conflicts in sufficient time without causing abortive work. The Contractor shall be responsible for notifying ADM Architects of any such discrepancy or conflict that may arise on site.

COORDINATION OF WORKS - These drawings are to be read in conjunction with the full set of consultant's drawings, specifications, reports and DA conditions.

NOMINATED ARCHITECT - The nominated Architect for ADM Projects (Australia) Pty Ltd T/A ADM Architects is Angelo Di Martino AIBB No.7608

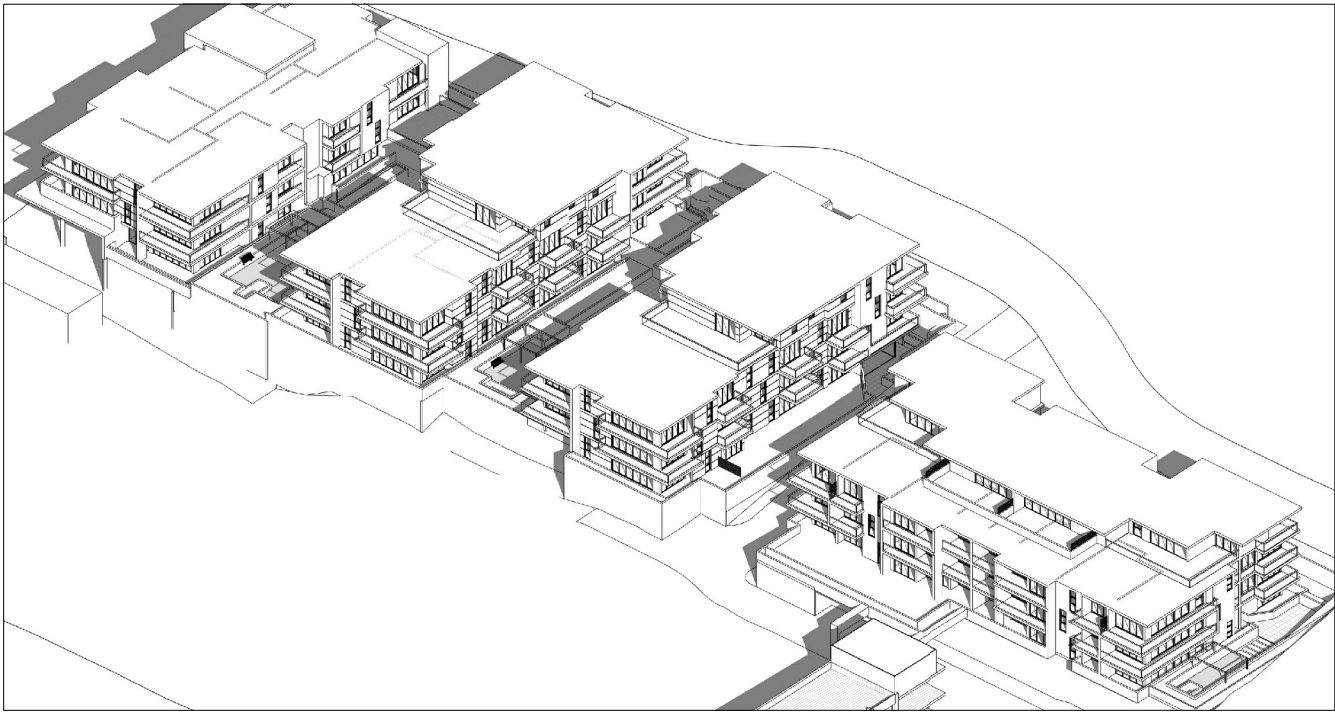


**NICOLAS  
DAOUD &  
CO PTY. Ltd**

Project  
DEMOLITION OF EXISTING STRUCTURES AND CONSTRUCTION  
OF A MIXED USE DEVELOPMENT COMPRISING RESIDENTIAL  
APARTMENTS ABOVE RETAIL SHOPS, COMMERCIAL TENANCIES  
AND ASSOCIATED CARPARKING AREAS  
at  
LOT 1, DP50193, LOT 3, DP1104857, PT.1, DP506764, LOTS 100 & 200,  
DP1017091,  
AKUNA & TERRALONG STREET  
KIAMA

scale	NTS
date	DECEMBER 2017
drawn	djm SJ chkd ADM
drawing	DEVELOPMENT APPLICATION
Project No.	SOLAR ACCESS DIAGRAM 1 of 2
2016-19(a)	Draw No. A-405
issue	D

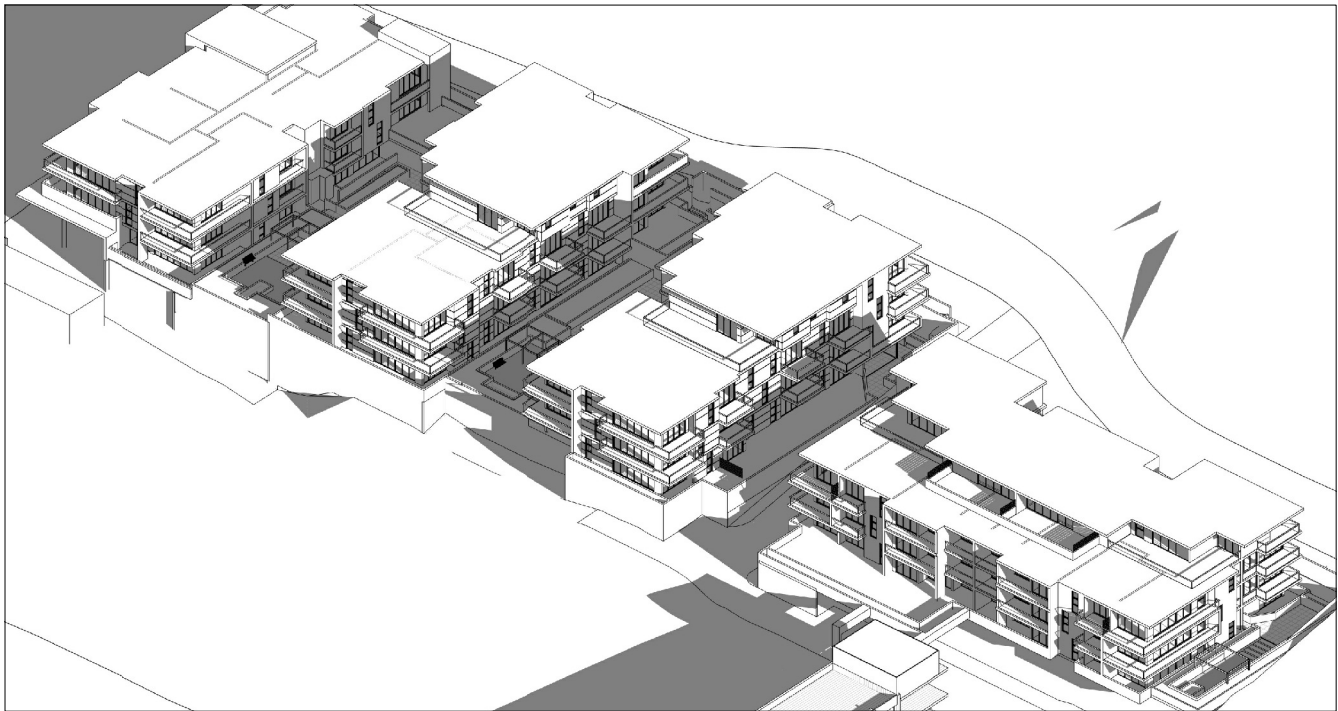
NOT FOR CONSTRUCTION



1pm



2pm



3pm

SOLAR ACCESS DIAGRAM  
WINTER SOLSTICE

B A	27.10.17 20.10.17	RE-ISSUED FOR DEVELOPMENT APPLICATION ISSUED FOR DEVELOPMENT APPLICATION	SP SP	ADM ADM
ISSUE	DATE	DESCRIPTION	initials	chkd
sign			date	
These drawings are not to be scaled. Figured dimensions shall be used in all cases.				

COPYRIGHT - These drawings remain the exclusive copyright of ADM Architects. Reproductions in any form whether electronic, digital or otherwise shall not be allowed except by express permission granted in writing by ADM Architects.

FIGURED DIMENSIONS - These drawings are not to be scaled. Figured dimensions shall be used in all cases.

DISCREPANCIES IN DIMENSIONS/POSITIONS/LOCATIONS/FINISHES The Contractor is to verify any dimensional, location or finish discrepancy with ADM Architects prior to any physical construction or setting out so that ADM Architects is given the opportunity to resolve potential discrepancies or conflicts in sufficient time without causing abortive work. The Contractor shall be responsible for notifying ADM Architects of any such discrepancy or conflict that may arise on site.

COORDINATION OF WORKS - These drawings are to be read in conjunction with the full set of consultant's drawings, specifications, reports and DA conditions.

NOMINATED ARCHITECT - The nominated Architect for ADM Projects (Australia) Pty Ltd T/A ADM Architects is Angelo Di Martino AIB No.7408



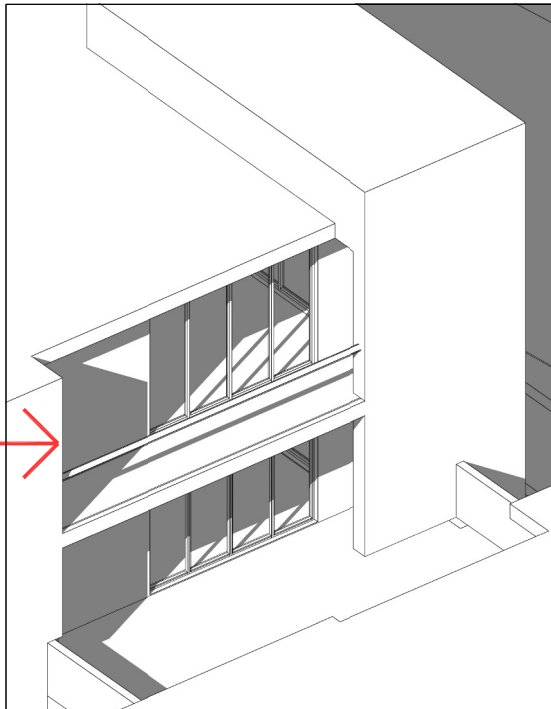
NICOLAS  
DAOUD &  
CO PTY. Ltd

Project  
DEMOLITION OF EXISTING STRUCTURES AND CONSTRUCTION  
OF A MIXED USE DEVELOPMENT COMPRISING RESIDENTIAL  
APARTMENTS ABOVE RETAIL SHOPS, COMMERCIAL TENANCIES  
AND ASSOCIATED CARPARKING AREAS  
at  
LOT 1, DP50193, LOT 3, DPI I04857, PT.1, DP506764, LOTS 100 & 200,  
DPI017091,  
AKUNA & TERRALONG STREET  
KIAMA

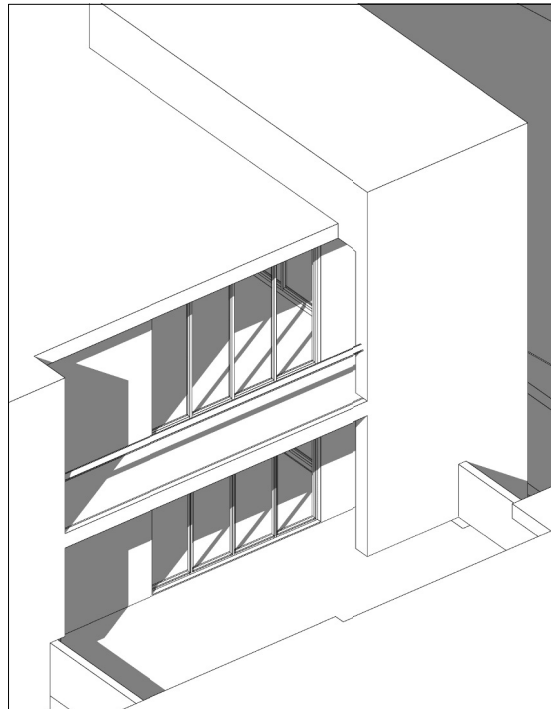
scale	NTS
date	DECEMBER 2017
drawn	djm SJ chkd ADM
drawing	DEVELOPMENT APPLICATION
Project No.	SOLAR ACCESS DIAGRAM 2 of 2
2016-19(a)	2016-19(a)
A-406	A-406
B	B

NOT FOR CONSTRUCTION

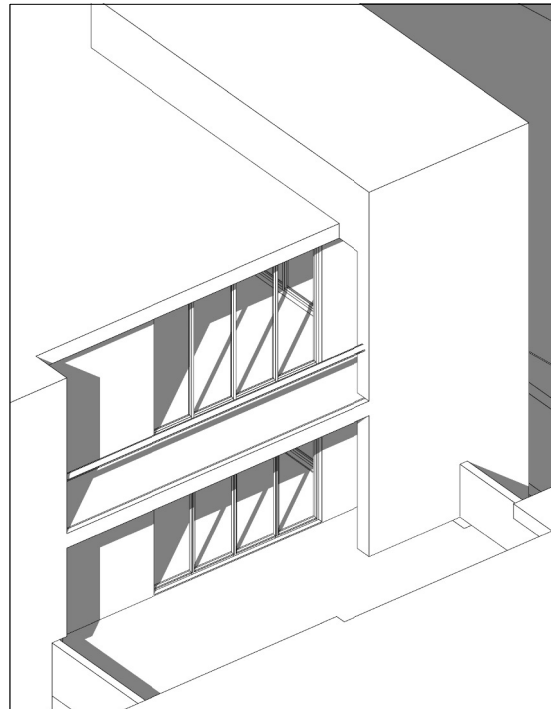
A307 →



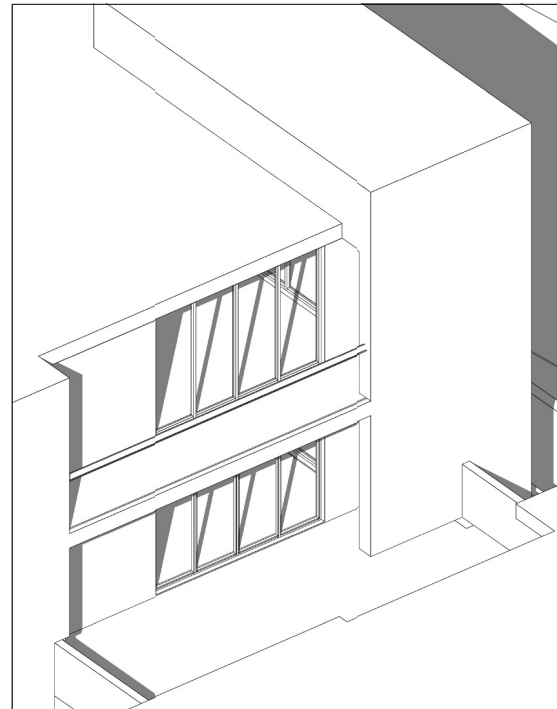
1115am



1130am

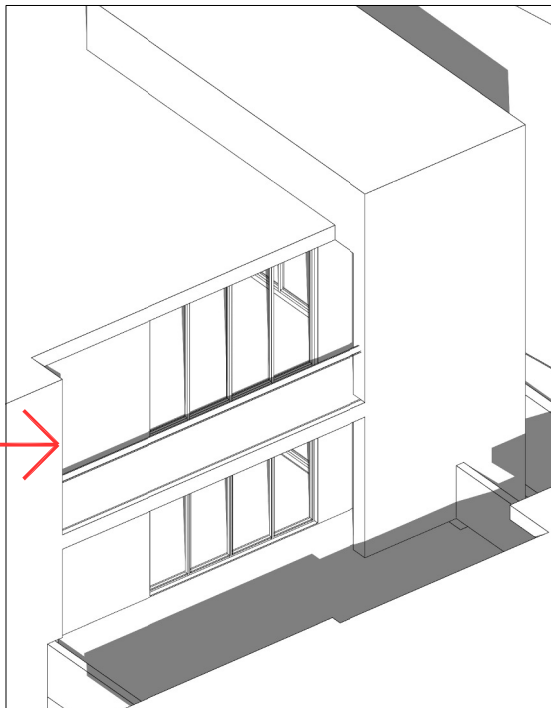


12pm

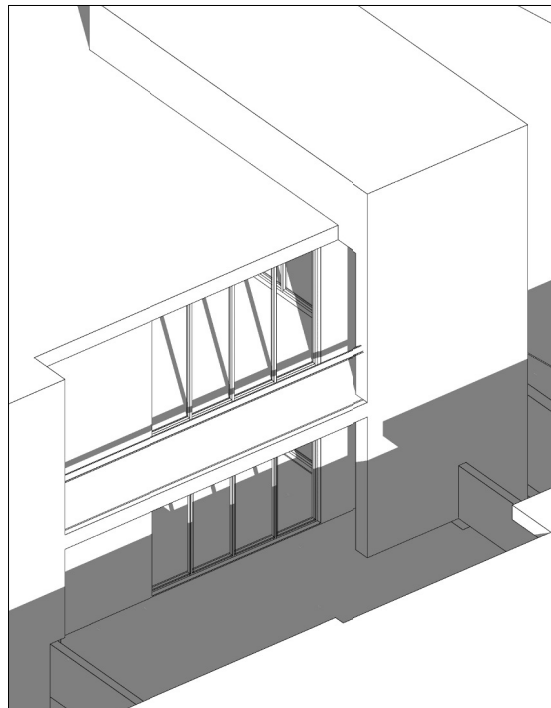


1230pm

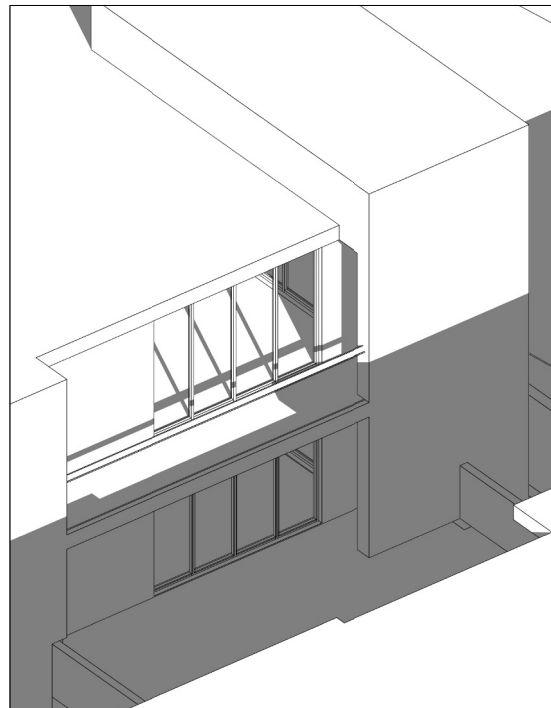
A307 →



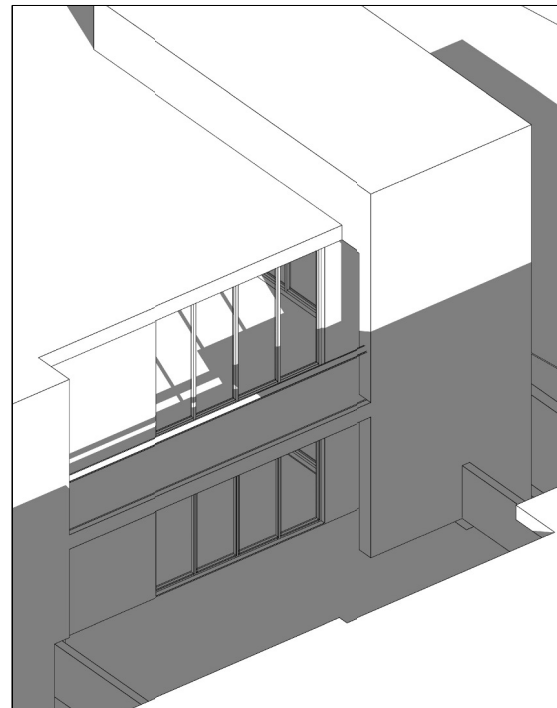
1pm



130pm



2pm



215pm

## SOLAR ACCESS DIAGRAM - A307 WINTER SOLSTICE

D	04.12.17	RE-ISSUED FOR DEVELOPMENT APPLICATION	SP	ADM
C	02.12.17	RE-ISSUED FOR DEVELOPMENT APPLICATION	SP	ADM
B	01.12.17	RE-ISSUED FOR DEVELOPMENT APPLICATION	SP	ADM
A	27.10.17	ISSUED FOR DEVELOPMENT APPLICATION	SP	ADM
ISSUE	DATE	DESCRIPTION	initials	chkd
sign		date		
*These drawings are not to be scaled. Figured dimensions shall be used in all cases.				

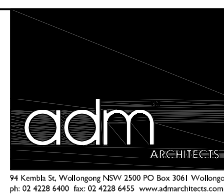
COPYRIGHT - These drawings remain the exclusive copyright of ADM Architects. Reproductions in any form whether electronic, digital or otherwise shall not be allowed except by express permission granted in writing by ADM Architects.

FIGURED DIMENSIONS - These drawings are not to be scaled. Figured dimensions shall be used in all cases.

DISCREPANCIES IN DIMENSIONS/POSITIONS/LOCATIONS/FINISHES The Contractor is to verify any dimensional, location or finish discrepancy with ADM Architects prior to any physical construction or setting out so that ADM Architects is given the opportunity to resolve potential discrepancies or conflicts in sufficient time without causing abortive work. The Contractor shall be responsible for notifying ADM Architects of any such discrepancy or conflict that may arise on site.

COORDINATION OF WORKS - These drawings are to be read in conjunction with the full set of consultant's drawings, specifications, reports and DA conditions.

NOMINATED ARCHITECT - The nominated Architects for ADM Projects (Australia) Pty Ltd T/A ADM Architects is Angelo Di Martino AIB No.7608



**NICOLAS  
DAOUD &  
CO PTY. Ltd**

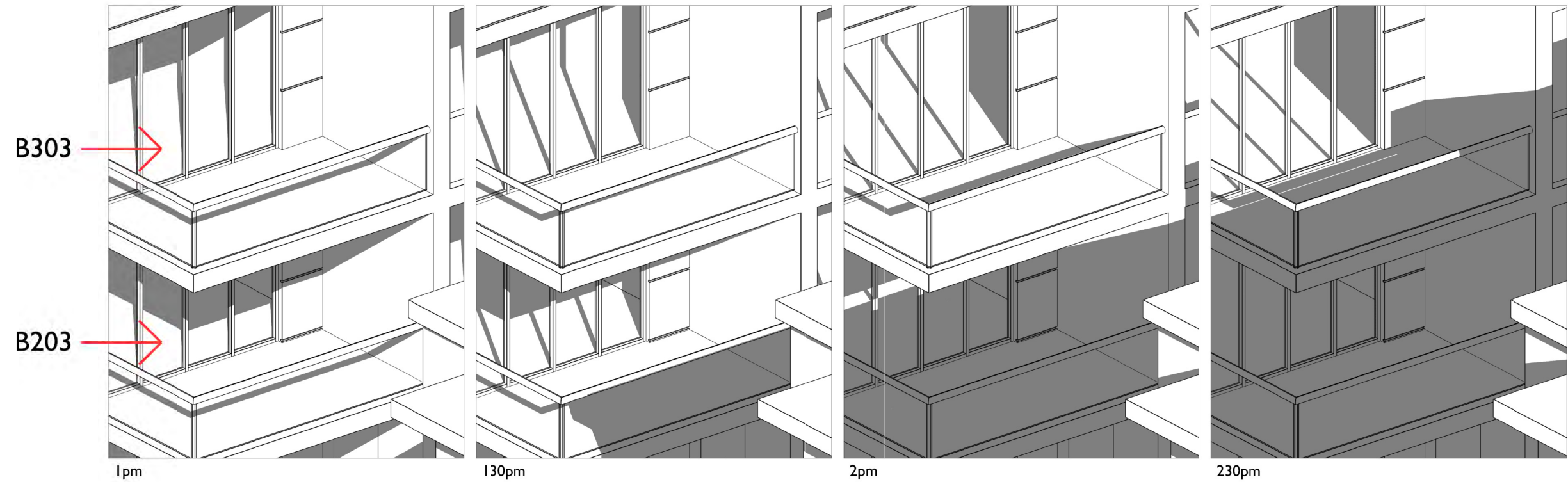
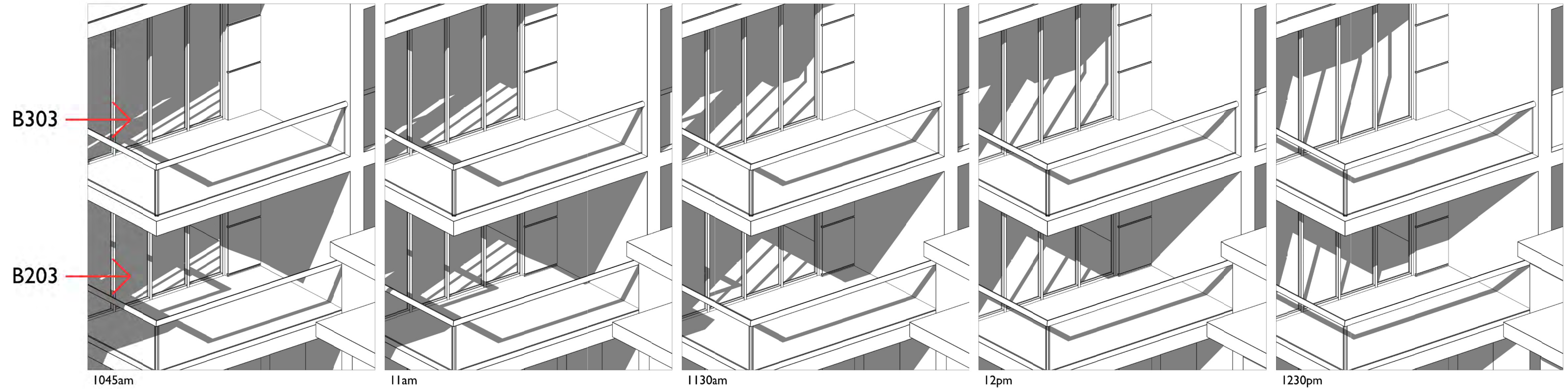
Project  
DEMOLITION OF EXISTING STRUCTURES AND CONSTRUCTION  
OF A MIXED USE DEVELOPMENT COMPRISING RESIDENTIAL  
APARTMENTS ABOVE RETAIL SHOPS, COMMERCIAL TENANCIES  
AND ASSOCIATED CARPARKING AREAS

at  
LOT 1, DP50193, LOT 3, DPI 104857, PT.1, DP506764, LOTS 100 & 200,  
DPI017091,  
AKUNA & TERRALONG STREET  
KIAMA

scale	NTS
date	DECEMBER 2017
drawn	djm SJ chkd ADM
drawing	DEVELOPMENT APPLICATION
Project No.	SOLAR ACCESS DIAGRAM - A307
2016-19(a)	Issue
A-407	D

NOT FOR CONSTRUCTION

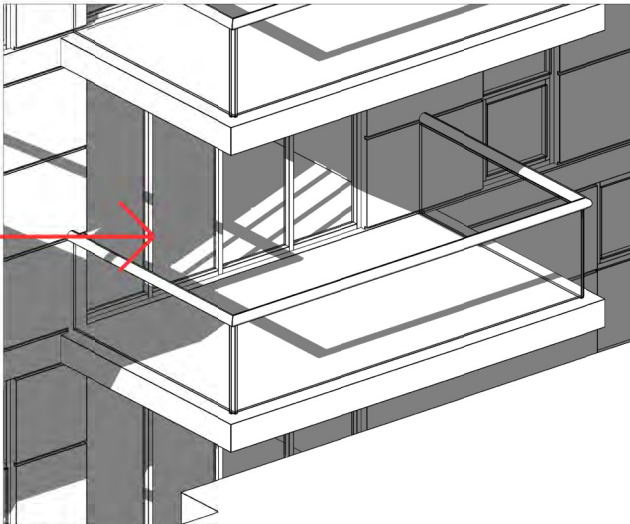




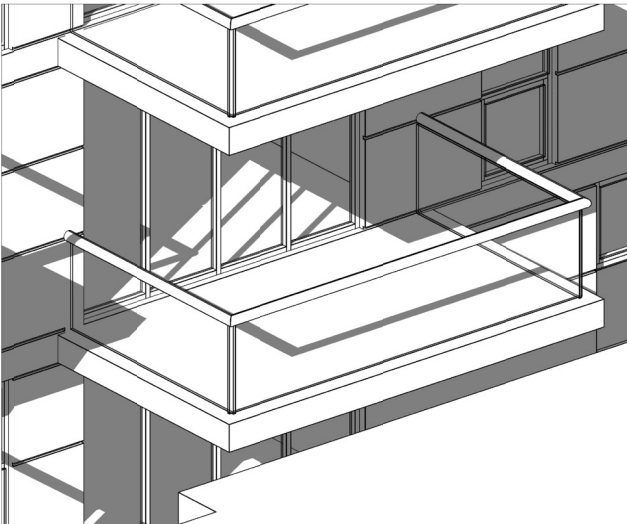
SOLAR ACCESS DIAGRAM - B203 & B303  
WINTER SOLSTICE



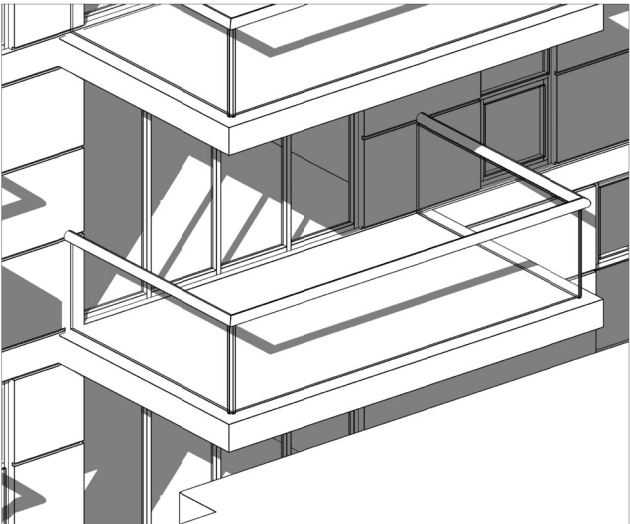
B204



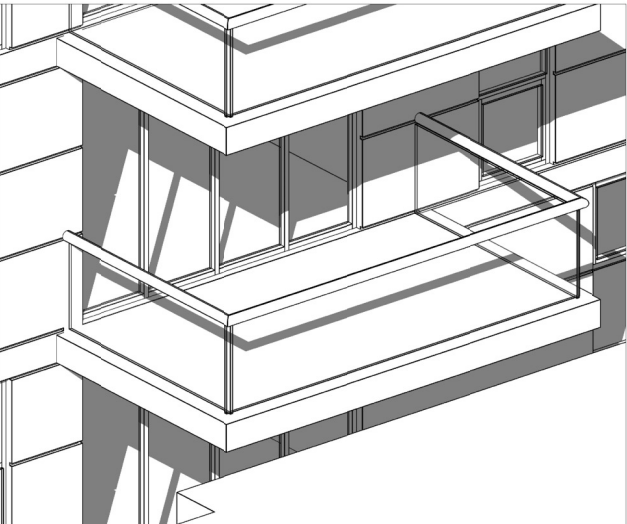
1100am



1130am

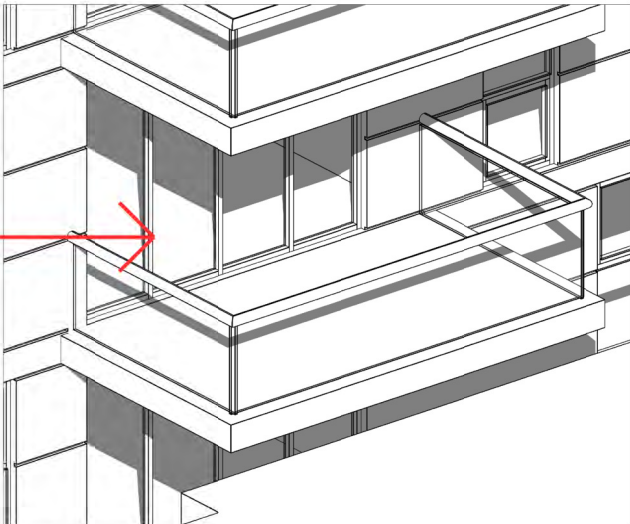


1200pm

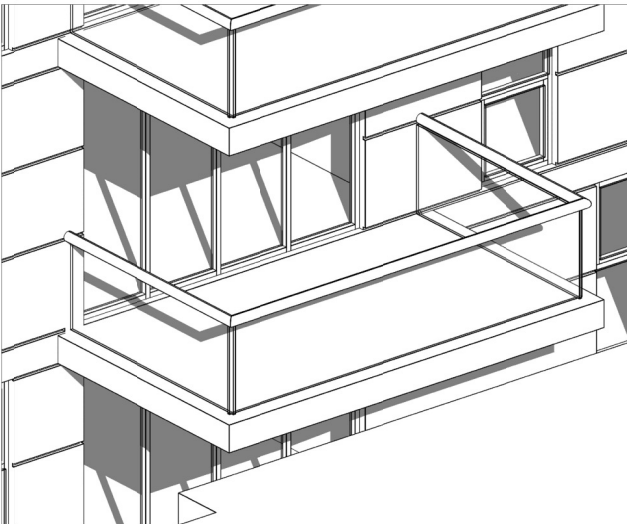


1230pm

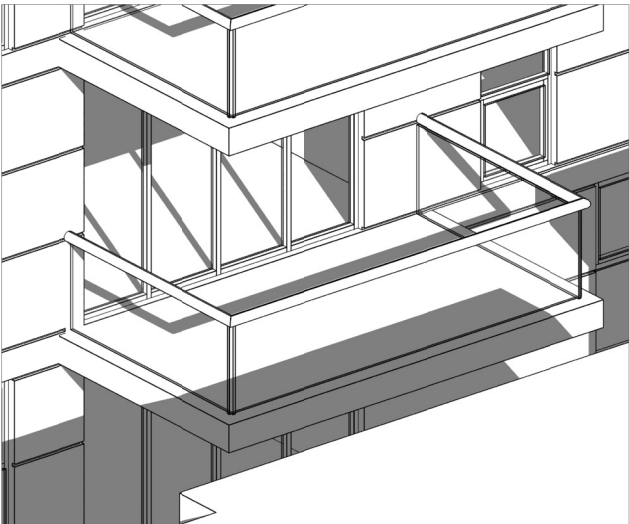
B204



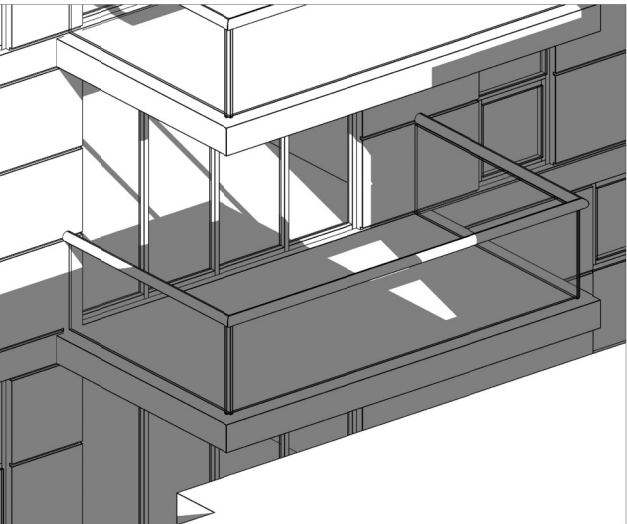
1pm



130pm



2pm



230pm

SOLAR ACCESS DIAGRAM - B204  
WINTER SOLSTICE

D	05.12.17	RE-ISSUED FOR DEVELOPMENT APPLICATION	SP	ADM
C	03.12.17	RE-ISSUED FOR DEVELOPMENT APPLICATION	SP	ADM
B	01.12.17	RE-ISSUED FOR DEVELOPMENT APPLICATION	SP	ADM
A	27.10.17	ISSUED FOR DEVELOPMENT APPLICATION	SP	ADM
ISSUE	DATE	DESCRIPTION	initials	chkd
sign			date	
These drawings are not to be scaled. Figured dimensions shall be used in all cases.				

COPYRIGHT - These drawings remain the exclusive copyright of ADM Architects. Reproductions in any form whether electronic, digital or otherwise shall not be allowed except by express permission granted in writing by ADM Architects.

FIGURED DIMENSIONS - These drawings are not to be scaled. Figured dimensions shall be used in all cases.

DISCREPANCIES IN DIMENSIONS/POSITIONS/LOCATIONS/FINISHES The Contractor is to verify any dimensional, location or finish discrepancy with ADM Architects prior to any physical construction or setting out so that ADM Architects is given the opportunity to resolve potential discrepancies or conflicts in sufficient time without causing abortive work. The Contractor shall be responsible for notifying ADM Architects of any such discrepancy or conflict that may arise on site.

COORDINATION OF WORKS - These drawings are to be read in conjunction with the full set of consultant's drawings, specifications, reports and DA conditions.

NOMINATED ARCHITECT - The nominated Architect for ADM Projects (Australia) Pty Ltd T/as ADM Architects is Angelo Di Martino AIB No.7608



NICOLAS  
DAOUD &  
CO PTY. Ltd

Project  
DEMOLITION OF EXISTING STRUCTURES AND CONSTRUCTION  
OF A MIXED USE DEVELOPMENT COMPRISING RESIDENTIAL  
APARTMENTS ABOVE RETAIL SHOPS, COMMERCIAL TENANCIES  
AND ASSOCIATED CARPARKING AREAS

at  
LOT 1, DP50193, LOT 3, DPI104857, PT.1, DP506764, LOTS 100 & 200,  
DPI017091,  
AKUNA & TERRALONG STREET  
KIAMA

scale	NTS
date	DECEMBER 2017
drawn	djm SJ chkd ADM
drawing	DEVELOPMENT APPLICATION
Project No.	SOLAR ACCESS DIAGRAM - B204
2016-19(a)	Issue
A-409	D

NOT FOR CONSTRUCTION